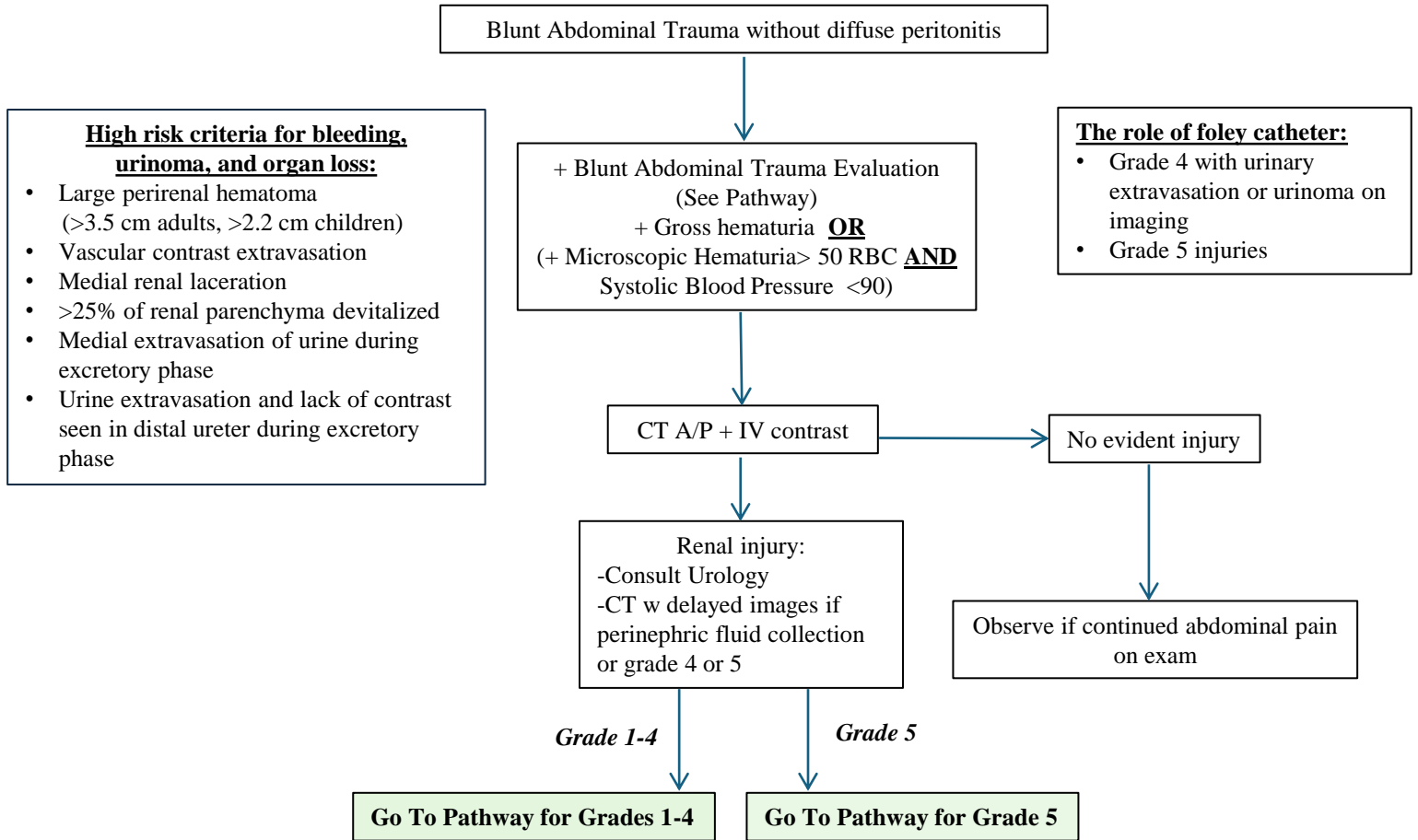
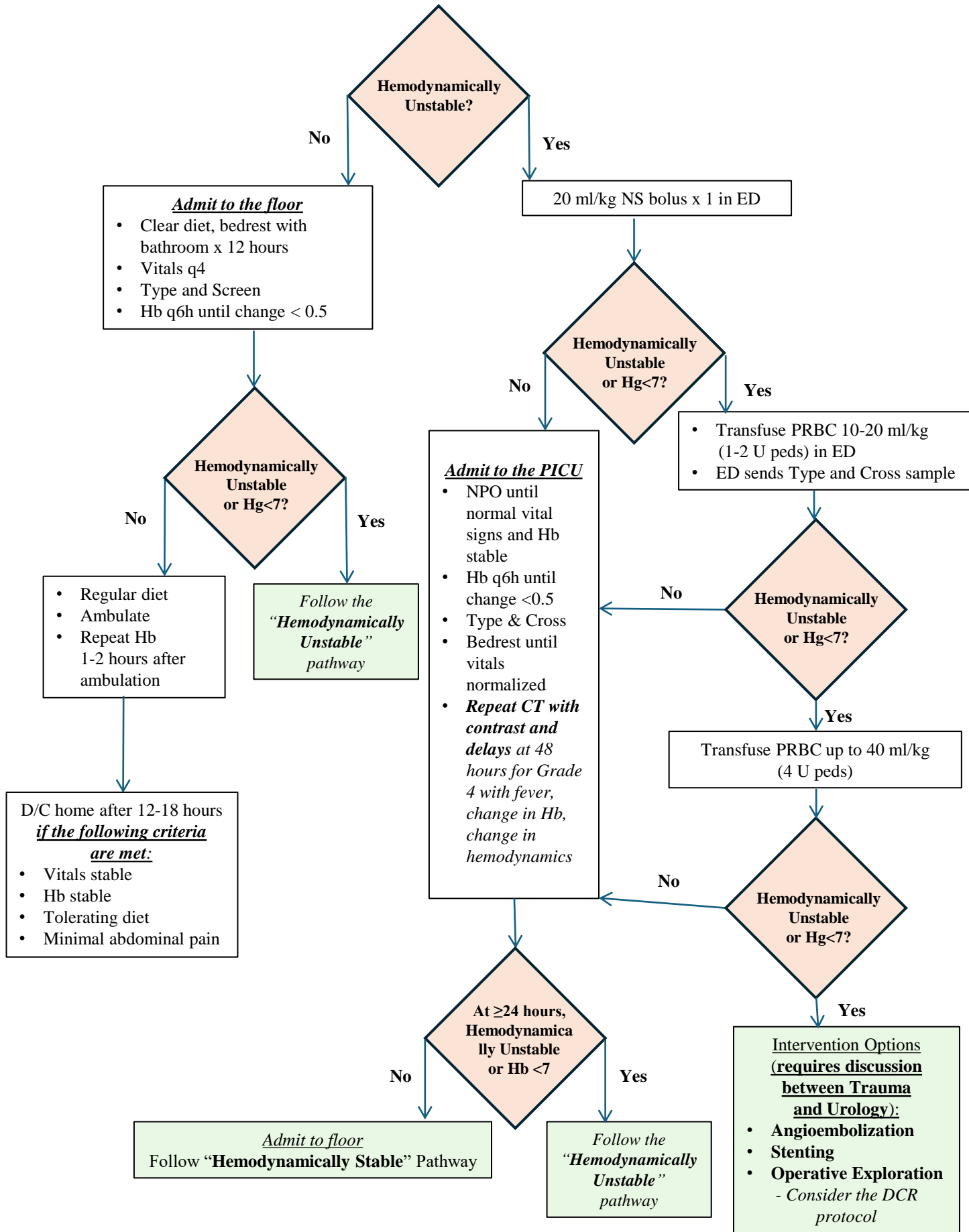


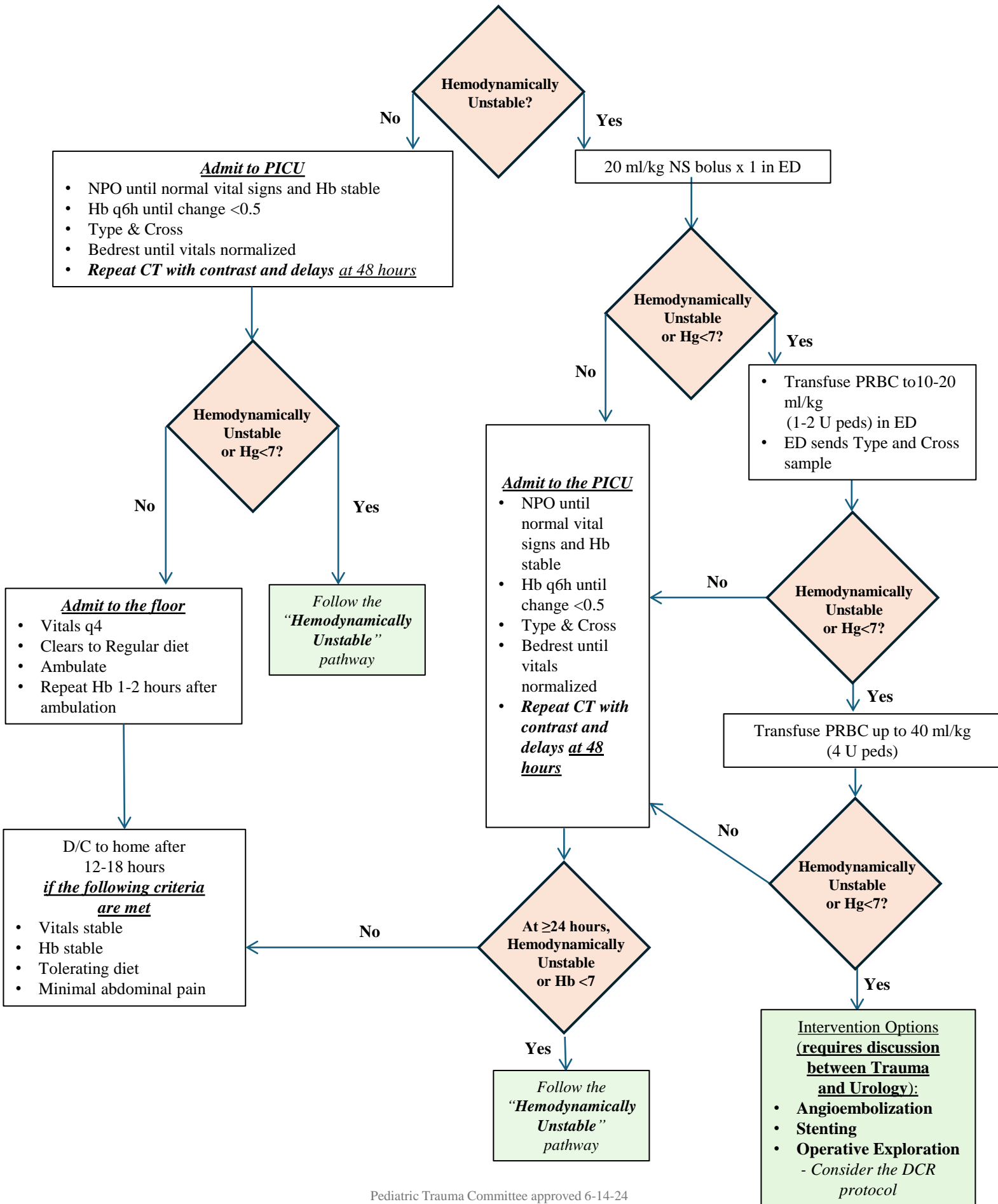
Hasbro Children's Hospital Pediatric Trauma Program Pediatric Blunt Renal Trauma – Initial Management



**Hasbro Children's Hospital Pediatric Trauma Program
Pediatric Blunt Renal Trauma – Grades 1-4**



**Hasbro Children's Hospital Pediatric Trauma Program
Pediatric Blunt Renal Trauma – Grades 5**



Hasbro Children's Hospital Pediatric Trauma Program: Pediatric Blunt Splenic, Hepatic, and Renal Trauma – Initial Management Algorithm

Definitions and Clarifications

- Need for ICU admission in this algorithm is based on isolated spleen, liver, or renal injury. ICU admission may be required by the presence of other injuries at presentation
- Blood should be drawn from a fresh peripheral stick to prevent artificial hemodilution
- Grade III-V patient will be seen by an attending surgeon in clinic for their post op visit to determine release to return to sport activities
- Hemodynamic Instability: persistent age-relative hypotension/tachycardia

Age	Weight Range (Kg)	Heart Rate (beats/min)	Blood Pressure (mmHg)	Respiratory Rate	UOP (ml/kg/hr)
0-12 mo	0-10	<160	>60	<60	2.0
1-2 yr	10-14	<150	>70	<40	1.5
3-5 yr	14-18	<140	>75	<35	1.0
6-12 yr	18-36	<120	>80	<30	1.0
>13 yr	36-70	<100	>90	<30	0.5

Follow Up Blunt Spleen, Liver, and Kidneyⁱ Injury

	Grade I	Grade II	Grade III	Grade IV	Grade V
Return to school*	1 week	1 week	1 week	1 week	All aspects of care will be individualized
Time of first visit**	3 weeks	3 weeks	3 weeks	3 weeks	
Return to age-appropriate activity*	3 weeks	4 weeks	5 weeks	6 weeks	
Return to contact sports	3 weeks	6 weeks	10 weeks	14 weeks	
Follow up ultrasound***	none	none	Spleen, Liver: Determined by injury and desire to play contact sports Kidney: US vs CT 3 months post injury if devitalized tissue present	Spleen, Liver: Determined by injury and desire to play contact sports Kidney: US vs CT 3 months post injury	

- *Other injuries permitting
- **Second visit needed for Grade 3, 4, 5 at time of return to activity
- ***Consider ultrasound if new onset symptoms, continued abdominal pain
- i. Patients with kidney injury should have blood pressure checked at outpatient follow up and referred to Renal if elevated