

Pulmonary Embolism Risk Stratification Algorithm for Intermediate and High Risk Patients

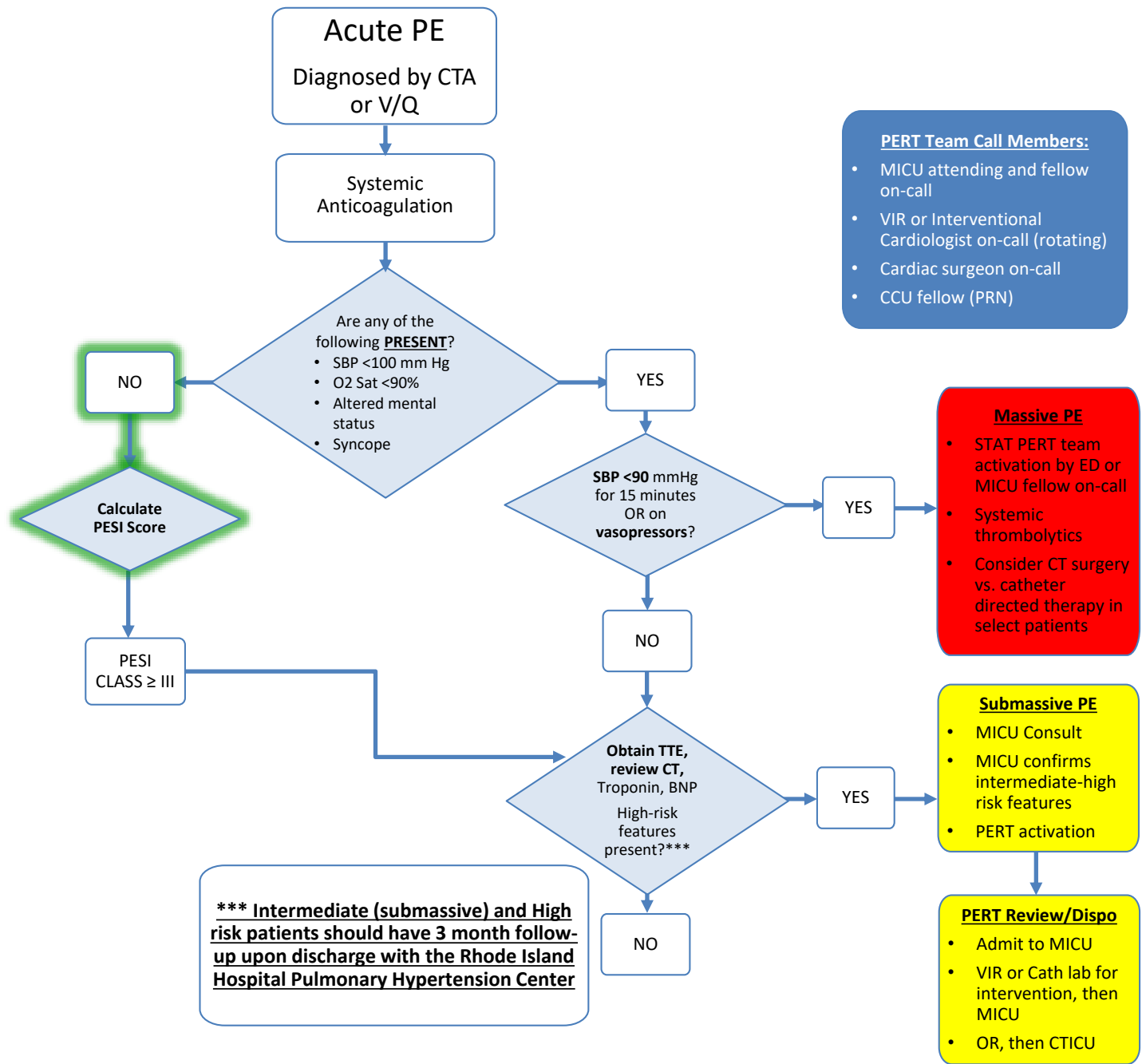
Pulmonary Embolism Severity Index (PESI):

Age	years
Male sex	+10
Cancer	+30
CHF	+10
Chronic lung Disease	+10
Heart Rate ≥ 110	+20
SBP < 100 Hg	+30
RR ≥ 30 /min	+20
Temperature < 36 C	+20
SpO2 < 90% on RA	+20
Altered Mental Status	+60

Risk Stratification:

- 65 class I } **Low Risk**
- 66–85 class II } **Intermediate Risk**
- 86–105 class III } **High Risk**
- 106–125 class IV } **High Risk**
- > 125 class V } **High Risk**

- *** High risk features**
- RV strain by TTE (RV dilation or dysfunction, RVSP ≥ 40 mmHg)
 - CTA RV/LV ratio ≥ 0.9
 - Clot seen in RA on CTA or TTE
 - Positive troponin (above baseline OR > 0.05 ng/mL)
 - Positive BNP (> 100 pg/mL)



- PERT Team Call Members:**
- MICU attending and fellow on-call
 - VIR or Interventional Cardiologist on-call (rotating)
 - Cardiac surgeon on-call
 - CCU fellow (PRN)

***** Intermediate (submassive) and High risk patients should have 3 month follow-up upon discharge with the Rhode Island Hospital Pulmonary Hypertension Center**