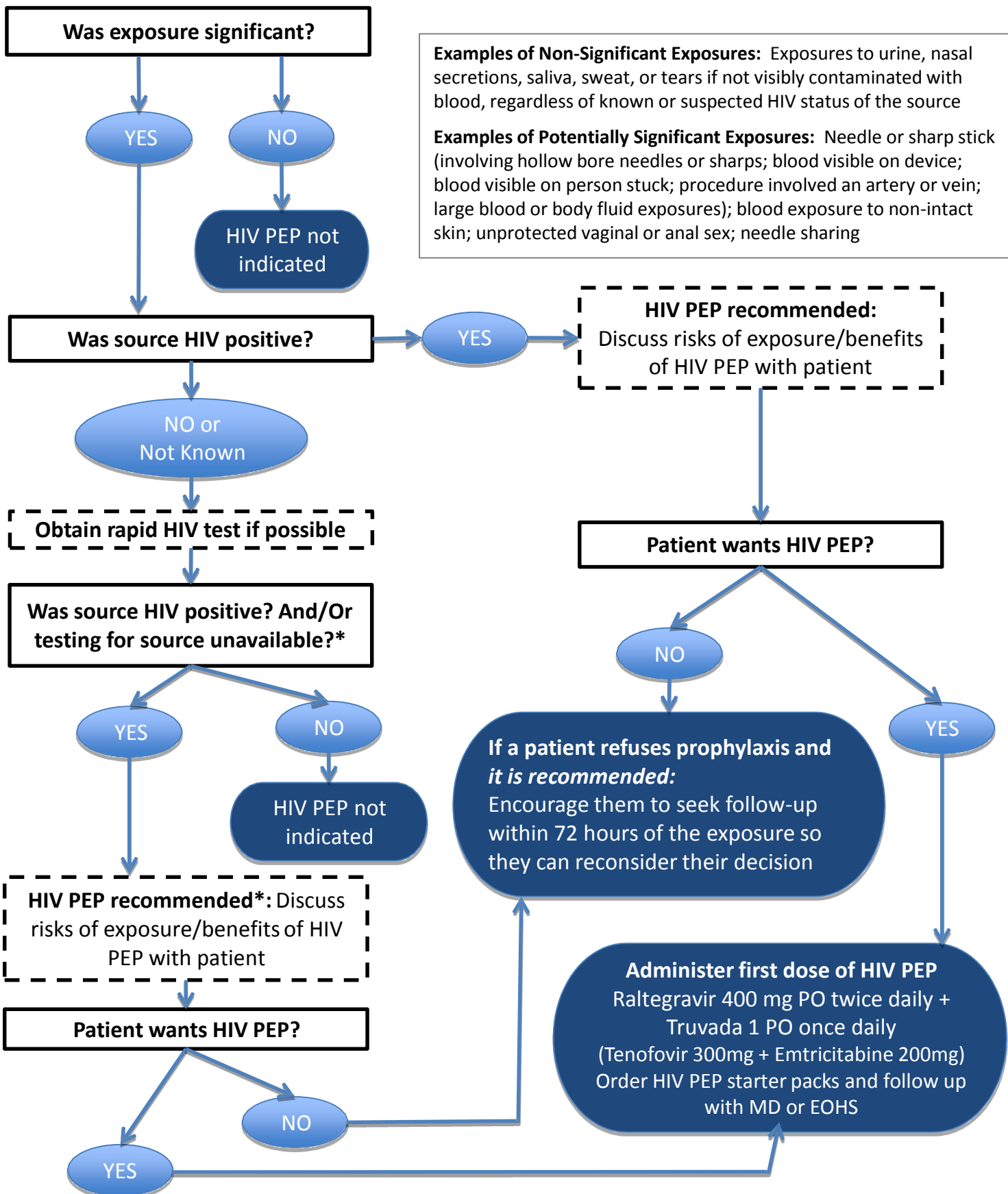


EMERGENCY DEPARTMENT BLOOD OR BODY FLUID EXPOSURE PROTOCOL

IS HIV PEP INDICATED?



Examples of Non-Significant Exposures: Exposures to urine, nasal secretions, saliva, sweat, or tears if not visibly contaminated with blood, regardless of known or suspected HIV status of the source

Examples of Potentially Significant Exposures: Needle or sharp stick (involving hollow bore needles or sharps; blood visible on device; blood visible on person stuck; procedure involved an artery or vein; large blood or body fluid exposures); blood exposure to non-intact skin; unprotected vaginal or anal sex; needle sharing

*If HIV status of SOURCE is unknown and test results are not yet available, consider initiating PEP while awaiting results